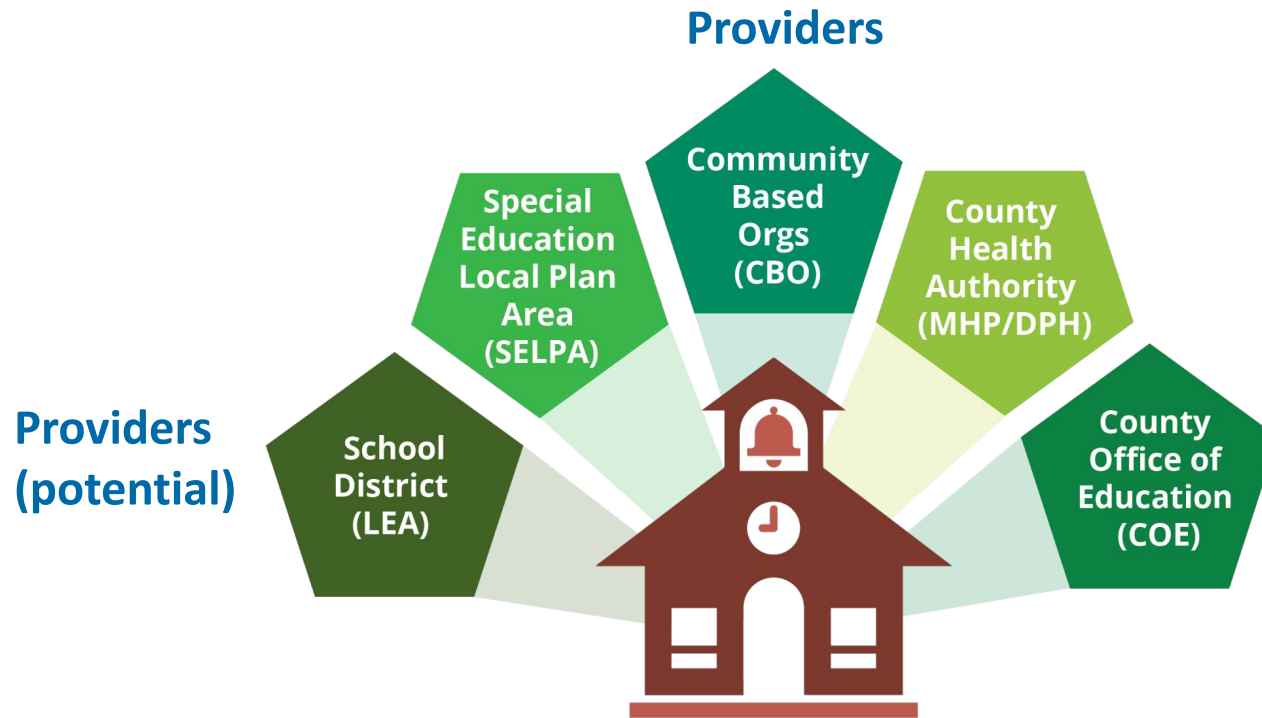


# Family Planning, Access, Care, and Treatment (FPACT) Program for LEAs & School Health



# Models of Billing Connected to Schools



Blending any of the 5 Models above

From the Practical Guide for Financing Social, Emotional, Mental Health in Schools:  
<https://cachildrenstrust.org/wp-content/uploads/2020/08/practicalguide.pdf>

# Overview



California program established in 1997 to support comprehensive family planning services for low-income Californians of reproductive age to reduce unintended pregnancies and promote optimal reproductive health.

***NOT designed for LEAs or school health providers specifically***

# Services Covered

- ❖ Family planning counseling and education
- ❖ Physical exams, pregnancy testing, cancer screenings, and sterilization
- ❖ All birth control methods including emergency contraception (Plan B) – either dispensed or by prescription
- ❖ Sexually transmitted infection (STI) testing & treatment, including HIV testing

**FPACT does NOT cover prenatal care or abortion services for pregnant clients**

# Client Eligibility



- ❖ Low-income Californians at or below 200% of federal poverty income guidelines
- ❖ “at risk of pregnancy or causing pregnancy”
- ❖ no other source of coverage for family planning services or require confidentiality to receive family planning services
- ❖ all gender identities and sexual orientation

# Student Enrollment

- ❖ Minors under age 18 may apply without parental consent
- ❖ There is no minimum age for enrollment
- ❖ Automatic internet application with immediate enrollment confirmation
- ❖ Good for 1 year; can be easily renewed
- ❖ No documentation or social security number required, self-reported information and income verification

\*California laws regarding parent/guardian consent and confidentiality apply

[www.schoolhealthcenters.org/consent-confidentiality-provider-toolkit](http://www.schoolhealthcenters.org/consent-confidentiality-provider-toolkit)



# Provider Eligibility & Enrollment

## Provider types:

MD/DO, Physician Assistant, Nurse Practitioner

Education/counseling can be provided by RN or unlicensed staff supervised by family planning clinician

- Medi-Cal provider in good standing
- Attend provider orientation and update session
- Follow program policies, standards and administrative procedures
- (directly or by referral) Provide comprehensive family planning services

# Reimbursement

# ~ \$60-190 / visit

- ❖ Fee-for-service rates based on submitted claims
- ❖ Includes coverage for family planning education and counseling provided by an RN or non-licensed health care provider

### Family PACT Sample

Client Name: \_\_\_\_\_ DOB: \_\_\_\_\_ Service Date: \_\_\_\_\_  
 Telephone: \_\_\_\_\_ Alt. Contact: \_\_\_\_\_ M.R. # \_\_\_\_\_  
 HAP #: \_\_\_\_\_ Exp. Date: \_\_\_\_\_ Return: \_\_\_\_\_

### FAMILY PLANNING SERVICES

Family Planning Diagnosis Codes	Office Visit	Drugs/Contraceptive Suppl
<b>ICD-10-CM Codes</b>	<b>New Client E &amp; M</b>	Provider administered drugs & onsite c must include NDC.
Z30.012 EC counseling and prescription	99202 MDM level: straightforward, or Time: 15-29 mins (M/F)	A4261 Cervical cap
Z30.09 Contraceptive counseling & advice (without initiating method)	99203 MDM level: low, or Time: 30-44 mins (M/F)	A4266 Diaphragm
Z30.011 OC initial prescription	99204 MDM level: moderate, or Time: 45-59 mins (F) Complications Only (M)	A4267 Male condoms
Z30.41 OC surveillance		A4268 Internal condoms
Z30.013 Injectable initial prescription	<b>Established Client E &amp; M</b>	A4269 U1 Spermicidal gel/jelly/ft
Z30.42 Injectable surveillance	99211 Not requiring presence, or under the supervision, of physician or QHP (M/F)	A4269 U2 Spermicidal supposit
Z30.015 Vaginal ring initial prescription		A4269 U3 Spermicidal vaginal fil
Z30.44 Vaginal ring surveillance	99212 MDM level: straightforward, or Time: 10-19 mins (M/F)	A4269 U4 Spermicidal sponge
Z30.016 Transdermal patch initial prescription		A4269 U5 Vaginal gel (Phexxi)
Z30.45 Transdermal patch surveillance	99213 MDM level: low, or Time: 20-29 mins (M/F)	S5199 Lubricant
Z30.017 Subdermal implant initial prescription	99214 MDM level: moderate, or Time: 30-39 mins (F) Complications Only (M)	J3490 U5 EC - ulipristal acetate*
Z30.46 Subdermal implant surveillance		J3490 U6 EC - levonorgestrel*
Z30.018 Barrier/spermicide (M/F) initial prescrip	<b>Additional Codes</b>	J3490 U8 DMPA injection
Z30.49 Barrier/spermicide (M/F) surveillance	99451 E-Consults	J7294 Segestrone acetate/E
Z30.430 IUC insertion	Q3014 Originating Site Facility Fee	J7295 EE/Etonogestrel (Nuv
Z30.431 IUC surveillance	T1014 Transmission Fee	J7296 LNG IUS 19.5 mg (Ky
Z30.432 IUC removal	G2010 Remote image submit by pt	J7297 LNG IUS 52 mg (Lilet
Z30.433 IUC removal and reinsertion	G2012 Brief check in by MD/QHP	J7298 LNG IUS 52 mg (Mire
Z30.02 Counsel NFP to avoid pregnancy	<b>Education &amp; Counseling</b>	J7300 Copper IUD
Z31.61 Procreative counseling, NFP	S9446 Group (M/F)* <b>or</b>	J7301 LNG IUS 13.5 mg (Sk
Z30.09 Counseling on sterilization (M/F)	S9445 Individual 10 mins (M/F)*	J7304 U1 Norelgestromin/EE (X
Z30.2 Sterilization surgery (M/F)	99401 U6 15 mins <sup>1</sup> counseling time (M/F)	J7304 U2 Levonorgestrel/EE (T)
Z01.812 Preprocedure labs (M/F) (bill with Z30.09)	99402 U6 30 mins <sup>1</sup> counseling time (M/F)	J7307 Etonogestrel Implant
Z01.818 Preprocedure exam (F) (bill with Z30.09)	99403 U6 45 mins <sup>1</sup> counseling time (M/F)	S4993 OCs
Z98.51 Tubal ligation status	* One time only codes. See PPBI office.	S5000** or Estradiol (with code N
Z98.52 Vasectomy status	† No more than one per day and two visits, in any combination, in rolling 30 days. See PPBI office.	S5001**
<b>Contraceptive-related Laboratory Tests</b>	<b>Office Procedures</b>	* One (1) pack per dispensing, with (ulipristal acetate and levonorgest of six (6) packs in any 12-month p
See PPBI ben fam and lab for covered tests and restrictions.	See Medi-Cal Part 2 for surgical & supplies modifiers	** See reverse for additional use of §
STI Risk Factor ICD-10-CM Codes: GC/CT Screening. Codes are required by Laboratory Providers	11981 Implant insertion	See PPBI ben grid and drug for c maximum quantity and earliest ref
Z20.2 Contact with/exposure to STI(s)	58300 Insert IUC	
Z22.4 Carrier of STI(s)	58301 Remove IUC	
Z72.51 High risk heterosexual behavior	55250 Vasectomy	
Z72.52 High risk homosexual behavior	57170 Diaphragm fitting	
	<b>Additional Procedures (no TAR required)</b>	
	Z30.431 IUC surveillance	

### Family PACT Sample

### FAMILY PLANNING - RELATED SERVICES

Chlamydia	Herpes, Genital	Warts, Genital Only
A56.01 CT cystitis/urethritis (M/F)	A60.01 Herpesviral infection of penis	A63.0 Anogenital warts (M/F)
A56.09 CT lower GU, cervix (F)	A60.04 Herpesviral vulvovaginitis	B07.9 Viral warts, unspec (M/F)
A56.3 CT anus and rectum (M/F)	N48.5 Ulcer of penis	B08.1 Molluscum contagiosum (M/F)
A56.4 CT pharynx (M/F)	N76.6 Ulceration of vulva	
N34.2 Other urethritis (M)		<b>Procedures</b>
N45.3 Epididymo-orchitis (M)	<b>Drugs</b> Quantity/NDC:	See Medi-Cal Part 2 for surgical and supplies modifiers
N72 Cervicitis (F)	Acyclovir 400/800 mg**	54050 Chem destr, penile lesion
N89.8 Indication: Leukorrhea NOS (F)		54056 Cryo destr, penile lesion
N94.10 Unspecified dyspareunia (F)	<b>PID (Females)</b>	54100 Biopsy, penis
N94.11 Superficial (introital) dyspareunia (F)	N70.03 Acute salpingitis & oophoritis	56501 Destruction vulvar lesion
N94.12 Deep dyspareunia (F)	N70.93 Salpingitis & oophoritis, unspec	57061 Destruction vaginal lesion
N94.19 Other specified dyspareunia (F)	N94.10 Unspecified dyspareunia (F)	56605 Biopsy, vulva
N94.89 Oth cond assoc with female genital organs & menstrual cycle	N94.11 Superficial (introital) dyspareunia (F)	
Dysuria (M/F)	N94.12 Deep dyspareunia (F)	<b>Drugs</b> Quantity/NDC:
R30.0 Painful micturition, unspec (M/F)	N94.19 Other specified dyspareunia (F)	Imiquimod 5% cream**
R30.9 Painful micturition, unspec (M/F)	N94.89 Oth cond assoc with female genital organs & menstrual cycle	Podoflox 0.5% solution/gel**
Z20.2 CT exposed partner (M/F)		
<b>Labs</b>	<b>Drugs</b> Quantity/NDC:	<b>Syphilis</b>
87205 Gram stain (symptomatic males only)	J0694 Cefoxitin 1 gm IM	A51.0 Primary (M/F)
<b>Drugs</b> Quantity/NDC:	J0696 Ceftriaxone 250 mg IM	A51.31 Condyloma latum (M/F)
87205 Gram stain (symptomatic males only)	Probenecid 500 mg tabs**	A51.39 Other secondary syphilis of skin (M/F)
Doxycycline 100 mg tabs**	Metronidazole 250/500 mg tabs**	A51.5 Early syphilis, latent (M/F)
For add'l info & alternative regimens, see PPBI ben grid.	For add'l info & alternative regimens, see PPBI ben grid.	A52.8 Late syphilis, latent (M/F)
<b>Gonorrhea</b>	<b>Urinary Tract Infections (Females Only)</b>	A53.0 Latent syphilis, unspec (M/F)
A54.01 GC cystitis/urethritis, unspec (M/F)	N30.00 Acute cystitis without hematuria	N48.5 Ulcer of penis (M)
A54.03 GC cervicitis, unspec (F)	N30.01 Acute cystitis with hematuria	N76.6 Ulceration of vulva, unspec (F)
A54.22 GC proctitis (M)	R10.30 Lower abdominal pain, unspec	Z20.2 Syphilis exposed partner (M/F)
A54.5 GC pharyngitis (M/F)	R30.0 Dysuria	
A54.6 GC infection anus/rectum (M/F)	R30.9 Painful micturition, unspec	<b>Drugs</b> Quantity/NDC:
N34.2 Other urethritis (M)	R31.0 Gross hematuria	J0561 Benzathine PCN 100,000 units/cc
N45.3 Epididymo-orchitis (M)	R35.0 Frequency of micturition	For add'l info & alternative regimens, see PPBI ben grid.
N72 Cervicitis (F)		<b>Cervical Abnormalities</b>
N89.8 Indication: Leukorrhea NOS (F)	<b>Labs</b> (symptomatic females only)	N88.0 Leukoplakia, cervix
N94.10 Unspecified dyspareunia (F)	81000 Urinalysis, dipstick with micro	R87.610 ASC-US cervical smear
N94.11 Superficial (introital) dyspareunia (F)	81002 Urinalysis dipstick without micro	R87.611 ASC-H cervical smear
N94.12 Deep dyspareunia (F)	81015 Urine microscopy	R87.612 LGSIL cervical smear
N94.19 Other specified dyspareunia (F)		R87.613 HGSIL cervical smear
N94.89 Oth cond assoc with female genital organs & menstrual cycle	<b>Drugs</b> Quantity/NDC:	R87.810 Cervical high risk HPV DNA positive
Dysuria (M/F)	Cephalexin 250/500 mg tabs**	Z87.410 Personal history of cervical dysplasia
R30.0 Painful micturition, unspec (M/F)	Ciprofloxacin 250 mg tabs**	
R30.9 Painful micturition, unspec (M/F)	TMP/SMX 80/400 mg tabs**	<b>Procedures</b>
Z20.2 GC exposed partner (M/F)	TMP/SMX DS 160/800 mg tabs**	See Medi-Cal Part 2 for surgical and supplies modifiers
	For add'l info & alternative regimens, see PPBI ben grid.	57452 Colposcopy
	<b>Vaginal Candidiasis</b>	57454 Colpo with biopsy & ECC
	B37.31 Acute Candidiasis vulva/vagina	57455 Colpo with biopsy
	B37.32 Chronic Candidiasis vulva/vagina	57456 Colpo with ECC
		R87.619 Unspec abn findings of cervical smear
<b>Labs</b>	<b>Labs</b>	<b>Procedures</b>
87205 Gram stain (symptomatic males only)	Q0111 Wet mount (provider performed)	See Medi-Cal Part 2 for surgical and supplies modifiers
<b>Drugs</b> Quantity/NDC:		57452 Colposcopy
J0696 Ceftriaxone 250 mg IM		57454 Colpo with biopsy & ECC
For add'l info & alternative regimens, see PPBI ben grid.		

# Considerations for LEAs

## REASONS TO PROVIDE

Pregnancy a leading cause of school absence and dropout

43% of HS seniors are sexually active

Sexual health = cornerstone of adolescent health

Creating trust opens doors to other important health issues

Providing FP services in schools increases utilization

## POTENTIAL DRAWBACKS

Prevailing politics /trust and relationship with families and community

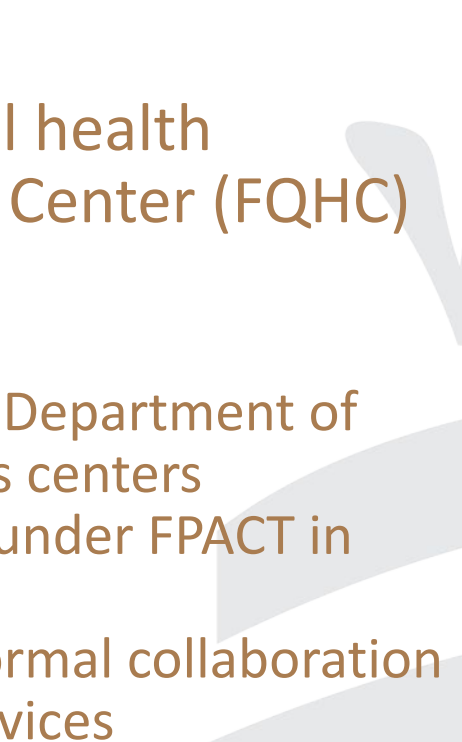
Beyond typical scope of LEA practice

Medical oversight

Documentation requirements, confidentiality requirements, ability to track and submit detailed claims

Competing priorities of school health programs

# FPACT in Action

- Not common in LEAs; best candidates are those that operate SBHCs and/or Wellness Centers in secondary schools
  - Mostly provided via partnership with local health department or Federally Qualified Health Center (FQHC)
  - Examples:
    - ❖ San Francisco Unified School District brings Department of Public Health staff to some of their wellness centers
    - ❖ Many local health centers provide services under FPACT in SBHCs
    - ❖ SBHCs operated by CBOs often develop a formal collaboration with an FQHC to have them offer FPACT services
- 

# Additional Resources

FPACT: [familypact.org](http://familypact.org)

Department of Health Care Services: [www.dhcs.ca.gov](http://www.dhcs.ca.gov)

Essential Access Health: [essentialaccess.org/](http://essentialaccess.org/)

ETR: [www.etr.org](http://www.etr.org)

Adolescent Sexual Health Working Group: [www.ashwg.org](http://www.ashwg.org)

CSHA: [www.schoolhealthcenters.org](http://www.schoolhealthcenters.org)



# Putting Health Care in Schools

The California School-Based Health Alliance is the statewide non-profit organization dedicated to **improving the health & academic success** of children & youth by **advancing health services** in schools.

Learn more:  
[schoolhealthcenters.org](http://schoolhealthcenters.org)



Santa Clara County  
Office of Education



# Meet the CSHA Team



Sergio J. Morales,  
Executive Director



Amy Blackshaw,  
Behavioral Health  
Director



Amy Ranger,  
Director of Programs

# CSHA is here for you!

Explore our resources on funding, sustainability, start-up, outreach and more

Reach out with any specific questions



# STAY CONNECTED

 [schoolhealthcenters.org](http://schoolhealthcenters.org)

 [info@schoolhealthcenters.org](mailto:info@schoolhealthcenters.org)

 [schoolhealthcenters](https://www.facebook.com/schoolhealthcenters)

 [sbh4ca](https://twitter.com/sbh4ca)

 [sbh4ca](https://www.instagram.com/sbh4ca)



Santa Clara County  Office of Education

 [scoec.org/plisd/yhw](http://scoec.org/plisd/yhw)

 [youthhealthwellness@scoec.org](mailto:youthhealthwellness@scoec.org)



[smorales@schoolhealthcenters.org](mailto:smorales@schoolhealthcenters.org)